

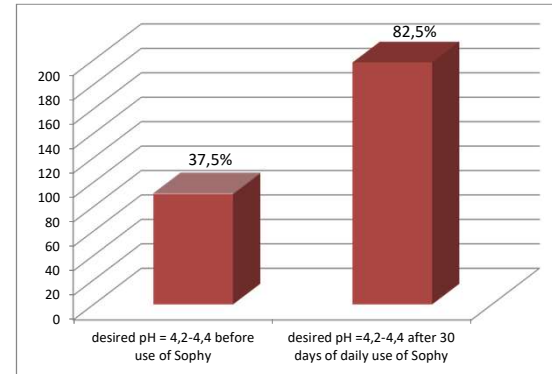
REVIEW OF THE RESULTS OF TESTING OF THE SOPHY GEL AMONG 240 WOMEN DURING 2017 AND 2018



anti-aging liposomal intimate gel

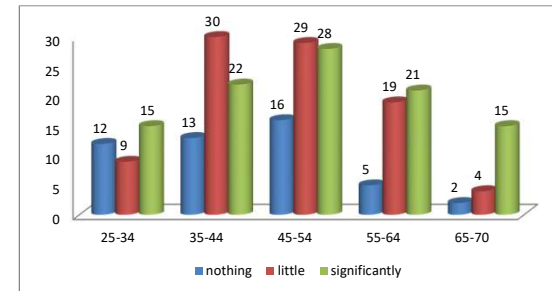
	age groups					
	25-34	35-44	45-54	55-64	65-70	total
number of respondents	36	65	73	45	21	240
percentage	15,00%	27,08%	30,42%	18,75%	8,75%	100,0%

	25-34	35-44	45-54	55-64	65-70	total
desired pH = 4,2-4,4 before use of Sophy	21	32	25	11	1	90
percentage	58%	49%	34%	24%	5%	37,5%
desired pH =4,2-4,4 after 30 days of daily use of Sophy	32	58	64	32	12	198
percentage	89%	89%	88%	71%	57%	82,5%



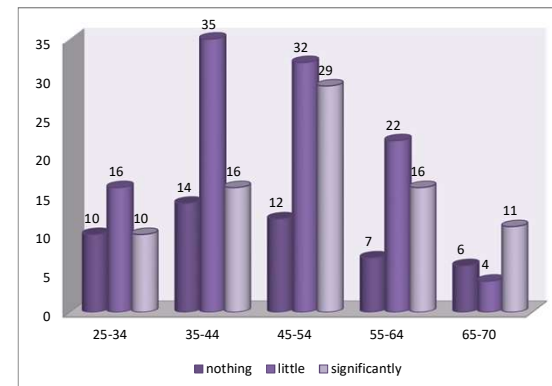
Graphic 1
A preferred pH factor of 4.2-4.4 in subjects before and after 30 days of daily use of Sophy

improving the sense of hydration	25-34	35-44	45-54	55-64	65-70	total	percentage
nothing	12	13	16	5	2	48	20%
little	9	30	29	19	4	91	38%
significantly	15	22	28	21	15	101	42%
	36	65	73	45	21	240	



Graphic 2
Improving the sense of hydration after 30 days of daily use of Sophy

improving the quality of sexual intimacy	25-34	35-44	45-54	55-64	65-70	total	percentage
nothing	10	14	12	7	6	49	20,4%
little	16	35	32	22	4	109	45,4%
significantly	10	16	29	16	11	82	34,2%
	36	65	73	45	21	240	



Graphic 3
Improving the quality of sexual intimacy after 30 days of daily use of Sophy